



DEVELOPMENT  
OF EASTERN POLAND  
NATIONAL COHESION STRATEGY



EUROPEAN UNION  
EUROPEAN REGIONAL  
DEVELOPMENT FUND



Project co-financed from the European Regional Development Fund  
within the Operational Programme Development of Eastern Poland 2007-2013

## Suppliers Catalogue

# NON-FERROUS MATERIALS PRODUCTS' SECTOR

cement and concrete

lime and gypsum

stone

components for glass industry

components and materials for glass industry





# NON-FERROUS MATERIALS PRODUCTS' SECTOR



## Suppliers for cement-concrete sector



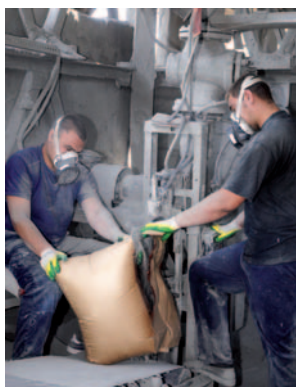
cement and concrete 3

## Suppliers for masonry sector



stone 11

## Suppliers for lime-gypsum sector



lime and gypsum 15

## Suppliers for glass sector



components and materials for glass industry 19

## Suppliers for ceramic sector



components and materials for ceramic industry 27



# Suppliers for cement and concrete sector





## Białostockie Kopalnie Surowców Mineralnych Sp. z o.o.

ul. Kombatantów 4, 15-102 Białystok

podlaskie

+48 (85) 662 36 02

+48 (85) 662 36 20

gorazdze@gorazdze.pl

sales contact

gorazdze@gorazdze.pl

www.gorazdze.pl

profile

aggregates, construction and quartz sand, gravel, sand and gravel mixes, lime mixes

Góraźdze Group is Poland's leader in the production of cement and one of the biggest Polish producers of concrete and aggregates. Its activity include three business lines: Góraźdze Cement, Góraźdze Concrete, Góraźdze Aggregates. Góraźdze Group companies belong to the international HeidelbergCement Group – one of the world's biggest producers of cement and other construction materials. In 2009 the consolidated turnover of Góraźdze Group was about PLN 1.4 billion. The companies employ 1,250 employees.

## Dyckerhoff Polska Sp. z o.o.

ul. Zakładowa 3, 26-052 Sitkówka-Nowiny

świętokrzyskie

+48 (41) 346 60 00

+48 (41) 346 64 88

grzegorz.nowak@dyckerhoff.pl

sales contact

grzegorz.nowak@dyckerhoff.pl

www.dyckerhoff.pl

profile

cement, concrete

Dyckerhoff Polska Sp. z o.o. offers many types of high quality cement, concrete and construction systems. The company's management system is supported by a modern SAP enterprise management system and a quality management system compliant with ISO 9001:2000 standard.

## Dyckerhoff Polska Sp. z o.o. Plant in Kielce

ul. Zakładowa 3, 26-052 Sitkówka-Nowiny

świętokrzyskie

+48 (41) 346 61 30

+48 (41) 346 61 31

robert.jankowski@dyckerhoff.pl

sales contact

robert.jankowski@dyckerhoff.pl

www.dyckerhoff.pl

profile

concrete

Dyckerhoff Polska Sp. z o.o. offers many types of high quality cement, concrete and construction systems. The company's management system is supported by a modern SAP enterprise management system and a quality management system compliant with ISO 9001:2000 standard.

## Dyckerhoff Polska Sp. z o.o. Plant in Starachowice

ul. Radomska 29, 27-200 Starachowice

świętokrzyskie

+48 (41) 273 71 05

+48 (41) 273 71 05

robert.jankowski@dyckerhoff.pl

sales contact

robert.jankowski@dyckerhoff.pl

www.dyckerhoff.pl

profile

concrete

Dyckerhoff Polska Sp. z o.o. offers many types of high quality cement, concrete and construction systems. The company's management system is supported by a modern SAP enterprise management system and a quality management system compliant with ISO 9001:2000 standard.

## Eco-Ter Sp. z o.o.

ul. M. Curie-Skłodowskiej 7/2, 10-109 Olsztyn

warmińsko-mazurskie

+48 (89) 535 33 32

+48 (89) 535 12 73

biuro@eco-ter.pl

sales contact

marcin@eco-ter.pl

www.eco-ter.pl

profile

aggregates (sand, gravel, grit, pebbles)

Eco-Ter is a member of General Beton S.A. Group – the biggest Italian producer of asphalt and concrete, which also operates in Poland, Romania, Bulgaria, Belarus, Tunisia and China, and to LOT Group, which is active in the Italian construction sector.

## Elektrobet

ul. Kasztanowa 22, 20-138 Lublin

lubelskie

+48 (81) 748 29 73

+48 (81) 446 70 85

info@elektrobet.pl

sales contact

info@elektrobet.pl

www.elektrobet.pl

profile

concrete

The firm owns a concrete production plant with the output of 40 m<sup>3</sup> of concrete per hour. It is a highly efficient installation which enables continuous production throughout year. Elektrobet produces and supplies ready-mix concrete, sells and transports construction materials, provides construction laboratory services, and produces and sells concrete products.

## Eurovisa

ul. Poznańska 152, 18-400 Łomża

podlaskie

+48 (86) 218 48 45

+48 (86) 218 48 45

eurovisa@op.pl

sales contact

eurovisa@op.pl

www.eurovisa.lomza.pl

profile

cement, lime dust, hydrated lime, hydraulic binder

Eurovisa specializes in the supply of loose materials (cement, lime dust, hydrated lime, hydraulic binder) for road and bridge building companies across Poland. It has a professional technical staff experienced in deliveries to construction companies. the firm has been present on the market for 10 years and has earned a reputation as a reliable business partner and supplier of cement, lime and lime dust to many road construction companies in north-eastern Poland (Suwałki, Grajewo, Nidzica, Pisz, Giżycko, Pułtusk, Lidzbark Warmiński) and in Lithuania.

## General Żwir Sp. z o.o.

Gardyny 4 A, 14-120 Dąbrówno

warmińsko-mazurskie

+48 (89) 647 92 41

+48 (89) 647 92 96

biuro@generalzwir.pl

sales contact

biuro@generalzwir.pl

www.generalzwir.pl

profile

natural and crushed aggregates

The main activity of General Żwir is the extraction and processing of aggregates. It specializes in the extraction, processing, sorting, rinsing and sale of natural aggregates that are used in concrete production. Since 2004 the company has been producing crushed aggregates used in the production of bituminous masses and construction of road foundations.



## Grupa Ożarów S.A.

Karsy 77, 27-530 Ożarów

świętokrzyskie

+48 (15) 839 11 00

+48 (15) 839 13 88

zarzad@ozarow.com.pl

sales contact

zarzad@ozarow.com.pl

www.ozarow.pl

profile

cement

Grupa Ożarów S.A. (Ożarów Group) offers a wide range of high quality cements. Since 1995 it has been a member of the international RH Plc Group based in Ireland. With over 2,100 production plants located in 25 countries, the Group is one of the biggest producers of construction materials in the world.

## Grupa Prefabet S.A. Branch in Długi Kąt

23-460 Józefów k/Biłgoraja

lubelskie

+48 (84) 687 80 37

+48 (84) 687 80 37

dlugi-kat@grupa-prefabet.pl

sales contact

dlugi-kat@grupa-prefabet.pl

www.grupa-prefabet.pl

profile

cellular concrete

Grupa Prefabet (Prefabet Group) is one of the biggest producers of cellular concrete in Poland. It is the country's leader in the production of grey Termorex cellular concrete. It is a member of CRH Group – an international group of manufacturers of construction materials.

## Grupa Prefabet S.A. Branch in Wilkasy

ul. Przemysłowa 2, 11-500 Giżycko

warmińsko-mazurskie

+48 (87) 428 00 95

+48 (87) 428 00 64

wilkasy@grupa-prefabet.pl

sales contact

wilkasy@grupa-prefabet.pl

www.grupa-prefabet.pl

profile

cellular concrete

Grupa Prefabet (Prefabet Group) is one of the biggest producers of cellular concrete in Poland. It is the country's leader in the production of grey Termorex cellular concrete. It is a member of CRH Group – an international group of manufacturers of construction materials.

## Kamieniołomy Świętokrzyskie Sp. z o.o.

ul. Błonie 8, 27-600 Sandomierz

świętokrzyskie

+48 (15) 861 16 62

+48 (15) 832 06 62

biuro@kruszywa-mineralne.pl

sales contact

mzarzeczny@kruszywa-mineralne.pl

www.kruszywa-mineralne.pl

profile

natural and crushed aggregates

The company's core business is the mining of Devonian dolomites and processing them into aggregates of different grades. The company's customers are road and bridge building companies, construction companies, concrete production plants and manufacturers of prefabricated concrete units.

## Kopalnia Dolomitu Radkowice

26-026 Morawica

świętokrzyskie

+48 (41) 311 75 71

+48 (41) 311 75 71

michal.glowacki@lafarge.com

**sales contact**

michal.glowacki@lafarge.com

www.lafarge.pl

**profile**  
dolomite

The average physical and mechanical parameters of the Triassic sandstone from Tumlin-Gród meet the criteria for raw blocks and slabs and broken stone. Thanks to its frost resistance, absorbability and grindability parameters, Tumlin sandstone is suitable for the production of broken stone for the construction and road engineering sectors. Tumlin sandstone has a cross-stratified structure with interlayers of thin-bedded sandstones and is used to produce slabs.

## KOSD S.A.

ul. Ściegiennego 177, 15-116 Kielce

świętokrzyskie

+48 (41) 361 47 91

+48 (41) 361 48 63

kosd@kosd.kielce.pl

**sales contact**

kosd@kosd.kielce.pl

www.kosd.nexim.net

**profile**

plain and granulated aggregates, lime dust, agricultural lime, explosion-proof stone slabs

KOSD is a Kielce-based company wholly owned by the State Treasury. The company manages four mines: Gluchowiec Mine (Jurassic limestone), Szczukowskie Górki Mine (Devonian limestone), Kostomłoty Mine (Devonian limestone) and Józefka mine (limestones and dolomites). KOSD mines have been operating for over 50 years now and have produced over 33,000,000 Mg of aggregates for the road construction sector.

## Kwarcsystem

Rudna Mała 47, 36-060 Głogów Małopolski

podkarpackie

+48 (17) 860 01 16

+48 (17) 860 01 54

kwarc@kwarcsystem.pl

**sales contact**

kwarc@kwarcsystem.pl

www.kwarcsystem.pl

**profile**

coloured sand and quartz gravels, coloured marble aggregates, dried sand and quartz gravel, dried marble aggregate

Kwarcsystem Sp. z o.o. is the only Polish producer of coloured aggregates of high quality. It is possible thanks to the first-class raw materials used for production and unique and proven technology. This technology is environmentally friendly and enables the use of coloured aggregates in different industries. By offering good products at reasonable prices, the company has gained many customers from the construction industry as well as from the landscaping, zoological or stuccowork manufacturing sectors. It also carries out intensive research into innovative technologies and new uses of coloured aggregates. The company also specializes in the mining, processing and supplying of natural quartz and marble aggregates from its own deposits. High quality of deposits and advanced technology of aggregate processing and packing allows the company to meet the needs of the most demanding customers.

## Lafarge Cement S.A.

ul. Warszawska 110, 28-366 Małogoszcz

świętokrzyskie

+48 (41) 248 70 00

+48 (41) 248 70 01

cementpolska@lafarge.com

**sales contact**

cok@lafarge.com

www.lafarge.pl

**profile**

cement

Lafarge Cement is the leading producer of cement on the Polish market. The company has two production plants, which rank among the biggest employers in their regions. Cementownia Kujawy (Kujawy Cement Plant) has one of the most modern production lines for the production of clinker in Europe. The production efficiency of both factories exceeds 4 m tons of cement each year. Lafarge Cement offers products with stable parameters that can be used in many sectors of the construction industry.

## Megola Zakład Wapienno-Piaskowy

Hedwizyn, 23-400 Bitgoraj

lubelskie

+48 (84) 686 08 85

+48 (84) 687 18 40

biuro@megola.com.pl

### sales contact

biuro@megola.com.pl

www.megola.com.pl

### profile

freight concrete, hydrated lime

All products that are produced in Zakład Wapienno-Piaskowy Megola (Megola lime and sand plant) are compliant with Polish standards and have the required certificates and approvals. The company is a member of the Silicate Producers Association Silikaty Polska (Silicates Poland). The Association has commissioned the firm to carry out research on improving the utility characteristics of silicate products and extending the range of their uses.

## Morawica S.A. Limestone Mine

ul. Górnicza 42, 26-026 Morawica

świętokrzyskie

+48 (41) 36 70 200

+48 (41) 36 70 299

kwmorawica@kwmorawica.kielce.pl

### sales contact

kwmorawica@kwmorawica.kielce.pl

www.kwmorawica.kielce.pl

### profile

broken mineral aggregates, marble, industrial limestone, agricultural fertilizers

Morawica S.A. Limestone Mine is located in świętokrzyskie voivodeship, in Białe Zagłębie, 13 km away from Kielce. The company is a renowned major producer of high quality stone for metallurgical, sugar and power industries, aggregates for construction industry and road engineering, and marble elements. The company also produces large quantities of lime (calcium-carbonate) fertilizers that are considered environmentally friendly.

## Olsztyńskie Kopalnie Surowców Mineralnych (OKSM)

ul. Budowlana 3, 10-424 Olsztyn

warmińsko-mazurskie

+48 (89) 521 10 00 +48 (89) 512 26 37

oksm@oksm.pl

### sales contact

piotr.zelazowski@oksm.pl

www.oksm.pl

### profile

aggregates (sand, gravels, grits, basaltic, sandstone and granite mixes), cement, lime, ready-mix concrete, prefabricated concrete units, asphalt, setts

OKSM (Mineral Mines in Olsztyn) is Poland's leading producer of mineral aggregates. Currently it has 13 mining and processing plants located in warmińsko-mazurski, mazowieckie, pomorskie and dolnośląskie voivodeships.

## PCC Silicium S.A.

Zagórze 92, 26-140 Łączna

świętokrzyskie

+48 (41) 254 82 11

+48 (41) 254 83 30

sekretariat@pccsilicium.pl

### sales contact

marketing@pccsilicium.pl

www.pccsilicium.pl

### profile

quartzite aggregates

The quartzite mining and cleaning plant in Łączna extracts and processes Early Devonian quartzite sandstone. On its basis the company produces industrial quartz for the metallurgical and fireproof materials sectors. Aggregates from this plant are also used for the construction of road and railway surfaces, paving of squares and storage yards, production of concretes and concrete products and asphalt masses. Crushed stone can be used for strengthening and regulating river banks as well as a decorative element in landscaping (gardens, allotments).

## PPHU s.c. Stan-Lub L. Bujala, S. Maliborski

Malinowszczyzna 16, 24-200 Bełżyce

lubelskie

+48 (81) 723 80 40

+48 (81) 723 80 40

firma@stanlub.com.pl

### sales contact

firma@stanlub.com.pl

www.stanlub.com.pl

### profile

aggregates, cement, lime fertilizers, transport

The enterprise specializes in the transport and sale of common sand (from own mines), dolomite aggregates, basaltic aggregates, granite aggregates and other lime products (bulk lime fertilizers, cements).

## SKSM Suwalskie Kopalnie Surowców Mineralnych

ul. St. Staniszeńskiego 65, 16-400 Suwałki

podlaskie

+48 (87) 565 16 61

+48 (87) 565 16 61 w. 222

sekretariat@sksm.suwalki.pl

### sales contact

sprzedaz@sksm.suwalki.pl

www.sksm.suwalki.pl

### profile

aggregates for concrete production

SKSM (Mineral Mines in Suwałki) are one of the biggest manufacturers of mineral aggregates in Poland. The offer is addressed to production plants making concrete, prefabricated concrete units, concrete setts, as well as construction and road engineering companies.

## Stachema Polska Sp. z o.o.

ul. Żwirki i Wigury 47, 21-040 Świdnik

lubelskie

+48 (81) 745 46 60

+48 (81) 745 46 61

stachema@stachema.pl

### sales contact

zamowienia@stachema.pl

www.stachema.pl

### profile

plasticizers, superplasticizers, concrete additives, additives to vibro-pressed products, aerators, accelerators, retarders, antifreeze admixtures for concreting at low temperatures, stabilizers, adhesives, concrete maintenance products, concrete cleaning products, repair mixes, industrial floorings, polypropylene fibres

Stachema company has its own research program based on the knowledge and experience of its staff and collaborating research centres from many European countries. Raw materials for the production of chemicals are supplied by reliable and qualified suppliers from Germany, Austria, Italy, Japan and other countries

## Żwir-Trans s.c.

Mątki 71, 11-042 Jonkowo

warmińsko-mazurskie

+48 (89) 512 92 48

+48 (89) 512 92 48

info@zwirownia.olsztyn.pl

### sales contact

info@zwirownia.olsztyn.pl

www.zwirownia.olsztyn.pl

### profile

ungraded aggregate mixes, sand, gravel, stabilization mixes

The firm's main business is the extraction and transportation of loose materials. Over years, the firm has expanded its machinery stock and range of services. It also mines and transports aggregates, carries out earth works and builds gravel roads.





# Suppliers for masonry sector





## ALV Granit s.c.

Malinowszczyzna 16, 24-200 Betzyce

lubelskie

+48 (81) 723 80 14

+48 (81) 723 80 14

biuro@alvgranit.pl

sales contact

biuro@alvgranit.pl

www.alvgranit.pl

profile

granite blocks, granite slabs and plates

ALV Granit is a company specializing in the processing and sale of granite. It offers a full range of granites. Thanks to their supreme physical and chemical properties, the granites offered by the firm have a wide range of different uses.

## Akropol

ul. Morgowa 83 A, 35-323 Rzeszów

podkarpackie

+48 (17) 857 76 66

+48 (17) 850 19 96

biuro@akropol.pl

sales contact

zygmunt@akropol.pl

www.akropol.pl

profile

granite blocks, polished and raw slabs, flame-treated slabs, pavement slabs, facade cladding, road and bridge kerbs, granite, marble and porphyry setts, porphyry tiles, granite joints, edges

Akropol is a natural stone processing plant. It supplies stone to stonecutters' workshops and road building and construction companies. It sells high quality products and provides professional consultancy, design and assembly services. Akropol stocks granite blocks, raw and polished slabs and formatted stone elements. The materials are imported from Scandinavia and other European countries and from Africa, South America and Asia. The company takes orders from institutions and individual customers.

## Granit

Pobiedno 119, 38-505 Bukowsko

podkarpackie

+48 691 618 234

+48 (13) 467 41 18

granitcypcarz@o2.pl

sales contact

granitcypcarz@o2.pl

www.granit.pfg.pl

profile

granite slabs

The firm specializes in the granite processing and production of granite products like tombstones, tombs, stairs, parapets, elements for fireplaces and lathe-turned granite elements – balusters, vases and other custom-made products. It also has a wholesale store of granites for local stonecutters' workshops.

## Kamieniołomy Świętokrzyskie Sp. z o.o.

ul. Błonie 8, 27-600 Sandomierz

świętokrzyskie

+48 (15) 861 16 62

+48 (15) 832 06 62

biuro@kruszywa-mineralne.pl,

sales contact

mzarzeczny@kruszywa-mineralne.pl

www.kruszywa-mineralne.pl

profile

Triassic sandstone

The average physical and mechanical parameters of the Triassic sandstone from Tumlin-Gród meet the criteria for raw blocks and slabs and broken stone. Thanks to its frost resistance, absorbability and grindability parameters, Tumlin sandstone is suitable for the production of broken stone for the construction and road engineering sectors. Tumlin sandstone has a cross-stratified structure with interlayers of thin-bedded sandstones and is used to produce slabs.

## Kopalnia Dolomitu Radkowice

26-026 Morawica

świętokrzyskie

+48 (41) 311 75 71

michal.glowacki@lafarge.com

### sales contact

michal.glowacki@lafarge.com

www.lafarge.pl

### profile

Triassic sandstone

The average physical and mechanical parameters of the Triassic sandstone from Tumlin-Gród meet the criteria for raw blocks and slabs and broken stone. Thanks to its frost resistance, absorbability and grindability parameters, Tumlin sandstone is suitable for the production of broken stone for the construction and road engineering sectors. Tumlin sandstone has a cross-stratified structure with interlayers of thin-bedded sandstones and is used to produce slabs.

## Kopalnia Tumlin-Gród

26-085 Miedziana Góra

świętokrzyskie

+48 508 255 737

+48 (41) 345 48 23

biuro@kopalinymineralne.pl

### sales contact

biuro@kopalinymineralne.pl

www.kopalinymineralne.com

### profile

Triassic sandstone

The average physical and mechanical parameters of the Triassic sandstone from Tumlin-Gród meet the criteria for raw blocks and slabs and broken stone. Thanks to its frost resistance, absorbability and grindability parameters, Tumlin sandstone is suitable for the production of broken stone for the construction and road engineering sectors. Tumlin sandstone has a cross-stratified structure with interlayers of thin-bedded sandstones and is used to produce slabs.

## Marmur-Płytki J. Łata

Podleże 48, 28-400 Pińczów

świętokrzyskie

+48 (41) 358 91 89

+48 (41) 357 61 46

marmury@marmury-plytki.pl

### sales contact

jacek@marmury-plytki.pl

www.marmury.home.pl

### profile

marbles, aglo-marbles, granites, Chinese granites, Pińczów limestone

The firm manufactures marble, limestone and granite products, which are used in commercial and residential buildings. It is one of the not so many Polish firms which process raw blocks of Polish marble. It also processes stone from Morawica, Bolechowice-Nowiny and Pińczów quarries.

## Marmury Centrum Lublin Sp.j.

ul. Krańcowa 88, 24-173 Markuszów

lubelskie

+48 (81) 881 89 25

+48 (81) 881 84 26

info@marmury.com.pl

### sales contact

info@marmury.com.pl

www.marmury.com.pl

### profile

marble, granite, travertine, onyx, limestone, quartzite, crystalline slates, sandstone, conglomerates, semi-precious stones

Marmury Centrum Lublin specializes in the processing of natural stones. Over years it has achieved the European standards of production and has won the leading position on the Polish market. Thanks to its thorough knowledge of the market and professional staff, MCL has established good relations with customers.



## Morawica S.A. Limestone Mine

ul. Górnicza 42, 26-026 Morawica

świętokrzyskie

+48 (41) 36 70 200

+48 (41) 36 70 299

kwmorawica@kwmorawica.kielce.pl

### sales contact

kwmorawica@kwmorawica.kielce.pl

www.kwmorawica.kielce.pl

### profile

broken mineral aggregates, marble, industrial limestone, agricultural fertilizers

Morawica S.A. Limestone Mine is located in świętokrzyskie voivodeship, in Białe Zagłębie, 13 km away from Kielce. The company is a renowned major producer of high quality stone for metallurgical, sugar and power industries, aggregates for construction industry and road engineering, and marble elements. The company also produces large quantities of lime (calcium-carbonate) fertilizers that are considered environmentally friendly.

## PCC Silicium S.A.

Zagórze 92, 26-140 Łączna

świętokrzyskie

+48 (41) 254 82 11

+48 (41) 254 83 30

sekretariat@pccsilicium.pl

### sales contact

marketing@pccsilicium.pl

www.pccsilicium.pl

### profile

quartzite aggregates

The quartzite mining and cleaning plant in Łączna extracts and processes Early Devonian quartzite sandstone. On its basis the company produces industrial quartz for the metallurgical and fireproof materials sectors. Aggregates from this plant are also used for the construction of road and railway surfaces, paving of squares and storage yards, production of concretes and concrete products and asphalt masses. Crushed stone can be used for strengthening and regulating river banks as well as a decorative element in landscaping (gardens, allotments).

## PPHU Dombud S. Łapot

Minostowice 44, 26-020 Chmielnik

świętokrzyskie

+48 (41) 354 91 72

+48 (41) 354 91 72

slawomir@lapot.com.pl

### sales contact

slawomir@lapot.com.pl

www.lapot.com.pl

### profile

natural marble, natural granite, onyx, quartz

Dombud manufactures products for the construction industry. Its main specialty is production of top quality outside and inside window sills. It also produces floor tiles, kitchen worktops and bathroom tops, stairs, fireplace elements as well as untypical and standard elements. It stocks thousands of finished products and thousands of m2 of slabs of stones from all over the world.



# Suppliers for lime and gypsum sector







## Dolina Nidy Sp. z o.o.

Leszcze 15, 28-400 Pińczów

świętokrzyskie

+48 (41) 357 81 00

+48 (41) 357 87 09

biuro@dolina-nidy.com.pl

### sales contact

sprzedaz@dolina-nidy.com.pl

www.dolina-nidy.com.pl

### profile

construction gypsum, gypsum putties, gypsum plasters, gypsum finishes and adhesives

Dolina Nidy is a Polish producer of interior finishing products made of natural gypsum stone that is extracted at the company's own mine. Products are available through a specialist network of 160 domestic and foreign partners. The company's products comply with the applicable Polish standards, are certified for safety mark „B” and are approved by the Polish Centre for Testing and Certification. What is more, the company has implemented Quality Management System ISO 9001:2000 and of Environmental Management System ISO 14001:2004.

## Kopalnia Drugnia Rządowa

26-015 Pierzchnica

świętokrzyskie

+48 (41) 353 90 24

+48 (41) 345 48 23

biuro@kopalinymineralne.pl

### sales contact

biuro@kopalinymineralne.pl

www.kopalinymineralne.com

### profile

Teritary limestones

The deposit of Teritary limestones has been exploited from 1963. These limestones can be used for the production of fodder chalk and lime (calcium-carbonate) fertilizers.

## ZPW Trzuskawica S.A.

Sitkówka, 26-052 Sitkówka-Nowiny

świętokrzyskie

+48 (41) 346 91 10

+48 (41) 346 91 30

info@trzuskawica.pl

### sales contact

info@trzuskawica.pl

www.trzuskawica.pl

### profile

burnt, hydrated and agricultural lime, lime dust, chalk, limestone, sorbents, aggregates

ZPW Trzuskawica S.A. is a member of CRH (Cement Roadstone Holding), which is one of the biggest construction companies in the world. It produces construction materials like cement, lime, aggregates, asphalt masses, prefabricated concrete units and enriched materials. These products are sold through a specialized distribution network.

## Kopalnia Suchowola

26-020 Chmielnik

świętokrzyskie

+48 (41) 345 48 23

biuro@kopalinymineralne.pl

### sales contact

biuro@kopalinymineralne.pl

www.kopalinymineralne.com

### profile

Jurassic limestones

Limestone from the Ptasznik 1 deposit complies with the applicable standards and can be used for the production of broken aggregates for road surfaces, for metallurgical industry, cellulose and sugar industries, and for the production of lime dust.

## KOSD S.A.

ul. Ściegiennego 177, 25-116 Kielce

świętokrzyskie

+48 (41) 361 47 91

+48 (41) 361 48 63

kosd@kosd.pl

sales contact

kosd@kosd.pl

www.kosd.kielce.pl

profile

Jurassic limestones

Limestone from the Ptasznik 1 deposit complies with the applicable standards and can be used for the production of broken aggregates for road surfaces, for metallurgical industry, cellulose and sugar industries, and for the production of lime dust.

## Lhoist Bukowa Sp. z o.o.

ul. Osiedlowa 10, 29-105 Krasocin

świętokrzyskie

+48 (41) 388 91 05

+48 (41) 388 91 06

cok@lhoist.com

sales contact

cok@lhoist.com

www.lhoist.pl

profile

burnt lime, limestone aggregate, limestone, dolomitic lime

Lhoist Bukowa is owned by Poland. It is a producer of lime and lime products from top quality deposits that meet the requirements of domestic and foreign customers. The company offers products and additional services within the range of: logistics, technical support, technical consultancy and promotion. Lhoist Poland is a member of the international Lhoist Group, which was founded over 100 years ago. It employs experienced specialists and collaborates with outside experts.

## Morawica S.A. Limestone Mine

ul. Górnicza 42, 26-026 Morawica

świętokrzyskie

+48 (41) 367 02 00

+48 (41) 367 02 99

kwmorawica@kwmorawica.kielce.pl

sales contact

kwmorawica@kwmorawica.kielce.pl

www.kwmorawica.kielce.pl

profile

broken mineral aggregates, marble, industrial limestone, agricultural fertilizers

Morawica S.A. Limestone Mine is located in świętokrzyskie voivodeship, in Białe Zagłębie, 13 km away from Kielce. The company is a renowned major producer of high quality stone for metallurgical, sugar and power industries, aggregates for construction industry and road engineering, and marble elements. The company also produces large quantities of lime (calcium-carbonate) fertilizers that are considered environmentally friendly.

## Nordkalk Sp. z o.o. Plant in Miedzianka

26-065 Piekoszów

świętokrzyskie

+48 (41) 306 01 67

+48 (41) 306 01 68

biuro@nordkalk.pl

sales contact

biuro@nordkalk.pl

www.nordkalk.pl

profile

lime

Nordkalk specializes in the extraction and processing of limestone for industry, agriculture and environment protection. All lime products are made of limestone and dolomites mined by Nordkalk in 20 locations in five countries.

## Piotrowice Sp. z o.o.

27-630 Zawichost

świętokrzyskie

+48 (15) 836 41 42

+48 (15) 836 40 21

info@piotrowice.com.pl

sales contact

nfo@piotrowice.com.pl

www.piotrowice.com.pl

profile

dolomite fillers, chalk fillers, gypsum

Piotrowice is a modern and thriving company that operates in many sectors: paints, lacquers, plastics, rubber, construction, paper and household chemicals. The products are very popular among manufacturers, traders and individual customers as they meet their strict quality requirements. The production process is based on state-of-the-art technologies and as a result products have very good technical parameters.





# Suppliers for glass sector





## Atar Glass M. Tarkowian

ul. Poniatowskiego 5, 11-100 Lidzbark Warmiński  
warmińsko-mazurskie  
+48 (89) 767 27 34  
+48 (89) 767 27 34  
atar\_biuro@o2.pl

sales contact  
atar\_biuro@o2.pl

www.atarglass.pl

profile  
glass grinders, transportation tables

Atar Glass produces glass grinders. It has a long experience in the production of multi-spindle grinders. Atar Glass devices are used both in Poland and abroad. Simple design, high quality materials and electronic control panel guarantee long life and durability. The firm also produces single-spindle designed especially for small glassworks.

## „Chemioplastyka” Spółka z o.o.

ul. Peryferyjna 8, 25-562 Kielce  
świętokrzyskie  
+48 (41) 331 20 87  
+48 (41) 331 77 75  
biuro@chemioplastyka.pl

sales contact  
zbyt@chemioplastyka.pl

www.chemioplastyka.pl

profile  
production and sale of plastic packaging, plastic bottles up to 1 litre, canisters of 1 – 30 litres

The company was established in 1946. Its main business is injection moulding and blowing extrusion of plastic containers.

## Eco-Ter Sp. z o.o.

ul. M. Curie-Skłodowskiej 7/2, 10-109 Olsztyn  
warmińsko-mazurskie  
+48 (89) 535 33 32  
+48 (89) 535 12 73  
biuro@eco-ter.pl

sales contact  
marcin@eco-ter.pl

www.eco-ter.pl

profile  
aggregates (sand, gravel, grit, pebbles)

Eco-Ter is a member of General Beton S.A. Group – the biggest Italian producer of asphalt and concrete, which also operates in Poland, Romania, Bulgaria, Belarus, Tunisia and China, and to LOT Group, which is active in the Italian construction sector. Eco-Ter's main activity is the extraction, processing, sorting, rinsing and sale of aggregates in Kronowo and in Barczewo commune.

## Euroglass Sp. z o.o.

ul. 1 Maja, 20-410 Lublin  
lubelskie  
+48 (81) 532 99 62  
+48 (81) 532 99 62  
biuro@euroglass.com.pl

sales contact  
biuro@euroglass.com.pl

www.euroglass.com.pl

profile  
insulated glass units, window and door glass, mirrors

The basic activity of the company is production of insulated glass units and retail sale and wholesale of window and ornamental glass and mirrors. In addition, the company produces windows and doors made of PVC and aluminium. Euroglass also provides services related to the products on offer.



## Huta Szkła w Jaśle S.A. Grupa Kapitałowa Krosno

ul. Śniadeckich 19, 38-200 Jasło

podkarpackie

+48 (13) 446 20 91

+48 (13) 446 20 94

sekretariat@hs-jaslo.com.pl

### sales contact

ar@hs-jaslo.com.pl

www.hs-jaslo.com.pl

### profile

pressed technical and household glassware, flat coloured glass

Huta Szkła w Jaśle S.A. (Glasswork in Jasło) is the Polish company that belongs to Krosno Group. It specializes in the production of pressed technical and household glassware and hand-formed flat coloured glassware. Products made by Huta Szkła w Jaśle (Glasswork in Jasło) can be used in the automobile industry, electric industry, and in houses institutions and hotels.

## JetSystem

ul. Niska 2, 82-300 Elbląg

warmińsko-mazurskie

+48 (55) 236 18 82

+48 (55) 236 18 84

biuro@jetsystem.pl

### sales contact

biuro@jetsystem.pl

www.jetsystem.pl

### profile

waterjet cutting machines, pumps, accessories

JetSystem is an authorized distributor of Omax Corp. in Poland, Lithuania, Latvia, Estonia, Russia, Ukraine and Belarus. It also provides high quality after-sale customer service. The firm's service technicians install equipment, train operators and provide technical support as well as warranty and post-warranty service. The firm has its own store of spare parts that can be delivered immediately to every location. JetSystem also sells waterjet cutting abrasive under its own brand name JetGarnet.

## Krak-Trans

ul. Magazynowa 4, 25-565 Kielce

świętokrzyskie

+48 (41) 334 00 57

+48 (41) 334 00 57

biuro@kraktrans.pl

### sales contact

biuro@kraktrans.pl

www.kraktrans.pl

### profile

float, ornamental, heat absorbing, reflective, safe, fireplace, and satin glass, mirrors, decorations, grinding, hardening, drilling, cutting, UV bonding, glassworking tools

Krak-Trans offers construction glass (window, float, reinforced, greenhouse, safe, anti-burglary, and fire-resistant glass) and other types of glass. Apart from construction glass, the company sells PVC windows and aluminium profiles. Krak-Trans also offers glassworking machines and tools. The company's branches are located in Kraków, Kielce, Radom, Tarnów and Nowy Targ.

## Krosglass S.A.

ul. Tysiąclecia 17, 38-400 Krosno

podkarpackie

+48 (13) 432 85 03

+48 (13) 432 85 04

krosglass@krosglass.com.pl

### sales contact

s.zborowski@krosglass.com.pl

www.krosglass.com.pl

### profile

glass fibres and fibre-based products: fabrics, glass mats, rowing, profiles

Krosglass produces glass fibre under a license agreement with the English company TBA Bishop.

## Lhoist Bukowa Sp. z o.o.

ul. Osiedlowa 10, 29-105 Krasocin

świętokrzyskie

+48 (41) 388 91 05

+48 (41) 388 91 06

cok@lhoist.com

sales contact  
cok@lhoist.com

www.lhoist.pl

### profile

burnt lime, lime aggregate, lime stone, dolomitic lime

Lhoist Bukowa is owned by Poland. It is a producer of lime and lime products from top quality deposits that meet the requirements of domestic and foreign customers. The company offers products and additional services within the range of: logistics, technical support, technical consultancy and promotion. Lhoist Poland is a member of the international Lhoist Group, which was founded over 100 years ago. It employs experienced specialists and collaborates with outside experts.

## PW Pro-inwent

ul. Kowalska 10, 20-115 Lublin

lubelskie

+48 (81) 532 67 40

+48 (81) 534 42 49

info@szklarznakowalskiej.pl

sales contact  
info@szklarznakowalskiej.pl

www.pro-inwent.pl

### profile

window glass, heat absorbing glass, fireplace glass, ornamental, laminated, sandblasted, hardened and coloured glass, mirrors

It is one of the oldest glassworks in Lublin. It is still run by its founder, Glasswork Master Andrzej Rozwadowski.

## Piecobud Sp. z o.o.

ul. Okulickiego 107, 37-450 Stalowa Wola

podkarpackie

+48 (15) 842 52 75

+48 (15) 844 54 23

piecobud@piecobud.pl

sales contact  
piecobud@piecobud.pl

www.piecobud.pl

### profile

construction, installation and assembly of: glass and metallurgical furnaces, rotary furnaces, tunnel furnaces and dryers, chamber furnaces, furnaces for chemical industry, water and steam boilers, industrial ceramic, reinforced concrete and steel chimneys, steel structures, industrial machinery and installations, control and measurement instruments and automation systems

Depending on the project being implemented and the investor's requests, the company provides: technical documentation of the plant, production, delivery and assembly of steel structures, delivery and installation of mechanical equipment and components, making and installation of process installations, including control and measurement instruments and automation systems, delivery of ceramic materials, construction of fire-resistant and insulating envelopes, demolition and dismantling works, disposal of hazardous materials.

## Pilkington Polska Sp. z o.o.

ul. Portowa 24, 27-600 Sandomierz

świętokrzyskie

+48 (15) 832 30 41

+48 (15) 832 39 25

ewa.chojnowska@pilkington.pl

sales contact  
ewa.chojnowska@pilkington.pl

www.pilkington.pl

### profile

construction glass

The company is a member of NSG Group – world's leader in the flat glass sector. It is also one of the biggest producers of automobile and construction glass. Production plants are located in 29 countries. It is the first company in the world to produce Pilkington Activ™ self-cleaning glass.



## Pujan

ul. Łęczycka 29, 82-300 Elbląg  
warmińsko-mazurskie  
+48 (55) 235 19 00  
+48 (55) 235 19 35  
e.wierzbinska@pujan.pl

sales contact  
l.halajko@pujan.pl

www.decraled.eu

### profile

bent, bevelled and ornamental glass, materials for production of stained-glass windows

Pujan's main business is glass working - bevelling, grinding, polishing, sanding and sculpting, production of stained-glass windows and sale of materials for production of stained-glass windows. Using state-of-the-art machinery, the firm provides a wide range of glass working services and manufactures a large selection of glass products.

## Sanglass S.A.

ul. Wojska Polskiego 14, 39-300 Mielec  
podkarpackie  
+48 (17) 733 89 00  
+48 (17) 733 89 01  
sanglass@sanglass.com.pl

sales contact  
sanglass@sanglass.com.pl

www.sanglass.com.pl

### profile

tempered flat and bent glass

Sanglass S.A. is a glass tempering plant located in Mielec. It sells glass products made of tempered flat and bent glass.

## Spólnet

ul. Zbożowa 10, 37-500 Jarosław  
podkarpackie  
+48 (16) 621 26 99  
+48 (16) 621 27 99  
info@spolnet.com.pl

sales contact  
info@spolnet.com.pl

www.spolnet.com.pl

### profile

glass decoration

The range of glassware decorated by Spólnet is not limited to glass containers of one manufacturer and the firm will cater for the needs of all customers. The firm mainly decorates cylindrical surfaces of different diameters and lengths, bottlenecks, conical surfaces of glass packaging, cups and mugs (with and without handles) and wine glasses using the screen printing method. It is also possible to cover the whole surface of products with satin, transparent colours and other enamels. What is more, the firm can handle all unusual orders after checking if the product surface can be printed on.

## ZPUH Lakton P. Stępień

ul. Staszica 16, 26-120 Bliżyn  
świętokrzyskie  
+48 (41) 254 12 45  
lakton@o2.pl

sales contact  
lakton@o2.pl

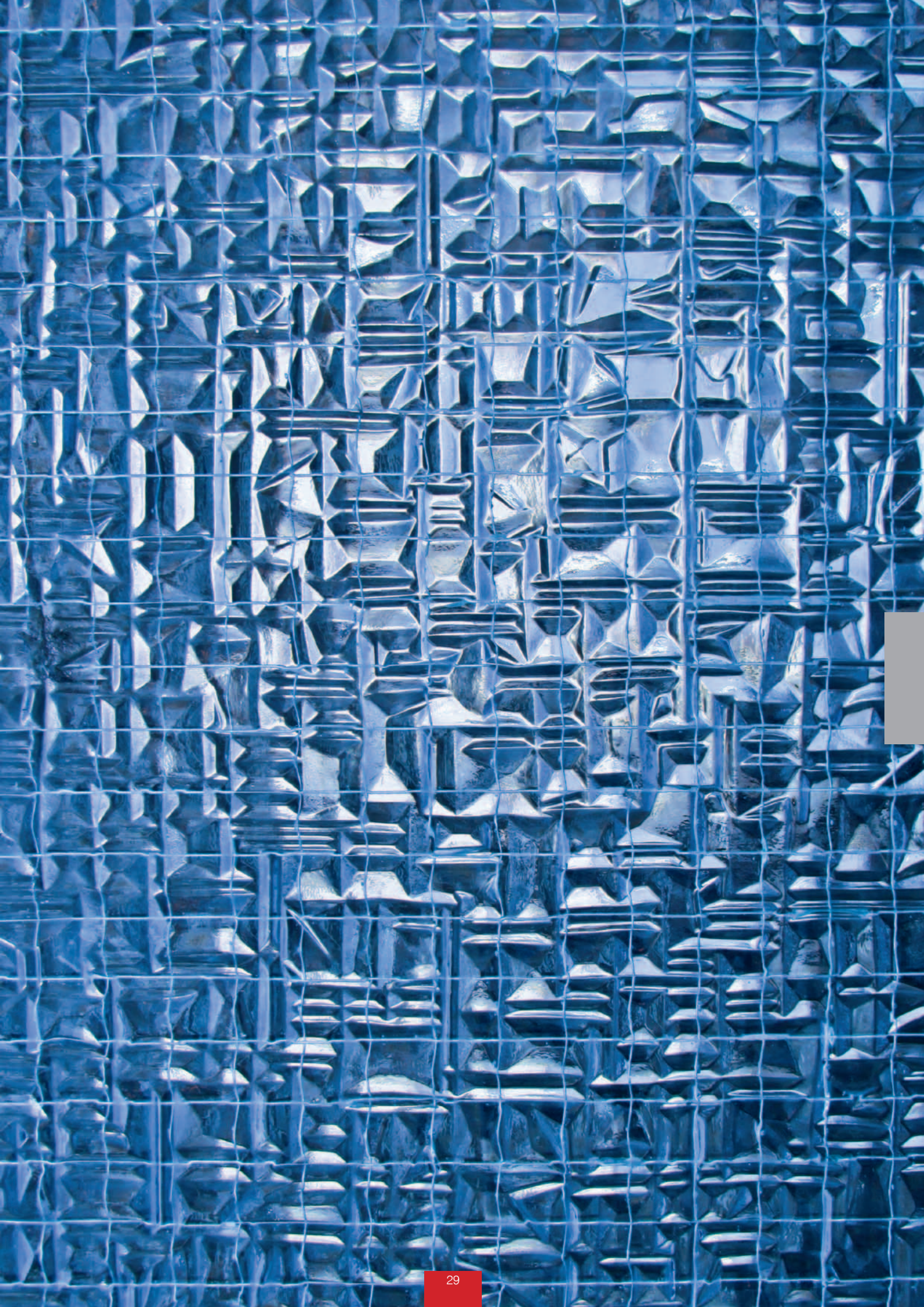
www.lakierdoszkl.pl

### profile

glass paints and lacquers

The first glass lacquers produced by Lakton were targeted at candle and grave light manufacturers. Two types of such lacquers were produced: transparent and opaque. Then, the firm launched glass paints and lacquers with metallic particles. One of Lakton's biggest achievements was the formulation of a frost-effect lacquer.







## Zajdel – Pracownia Szkła i Ceramiki

ul. Białobrzaska 90, 38-400 Krosno

podkarpackie

+48 (13) 432 52 64

+48 (13) 432 52 64

krzysztofzajdel@gazeta.pl

### sales contact

krzysztofzajdel@gazeta.pl

www.zajdel.com.pl

### profile

construction and reparation of ceramic furnaces for glass melting and working, chamotte bricks and linings, resistance furnaces, ceramic linings, fusing

The firm's core business is the construction and reparation of different types of ceramic furnaces for glass melting and working. It also specializes in the production of chamotte bricks and linings, which are indispensable for an efficient and economical operation of tank furnaces. The firm also constructs resistance furnaces used for firing ornaments on glassware and in fusing technology.

## ZPUH Lakton P. Stępień

ul. Staszica 16, 26-120 Bliżyn

świętokrzyskie

+48 (41) 254 12 45

lakton@o2.pl

### sales contact

lakton@o2.pl

www.lakierdoszkla.pl

### profile

glass paints and lacquers

The first glass lacquers produced by Lakton were targeted at candle and grave light manufacturers. Two types of such lacquers were produced: transparent and opaque. Then, the firm launched glass paints and lacquers with metallic particles. One of Lakton's biggest achievements was the formulation of a frost-effect lacquer.

## ZPW Trzuskawica S.A.

Sitkówka, 26-052 Sitkówka-Nowiny

świętokrzyskie

+48 (41) 346 91 10

+48 (41) 346 91 30

info@trzuskawica.pl

### sales contact

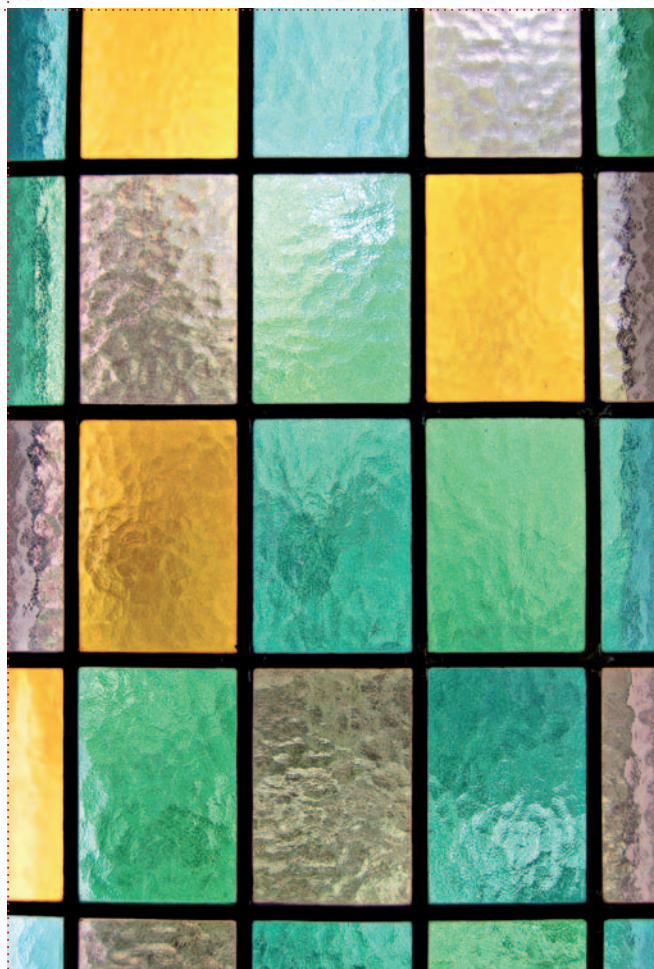
info@trzuskawica.pl

www.trzuskawica.pl

### profile

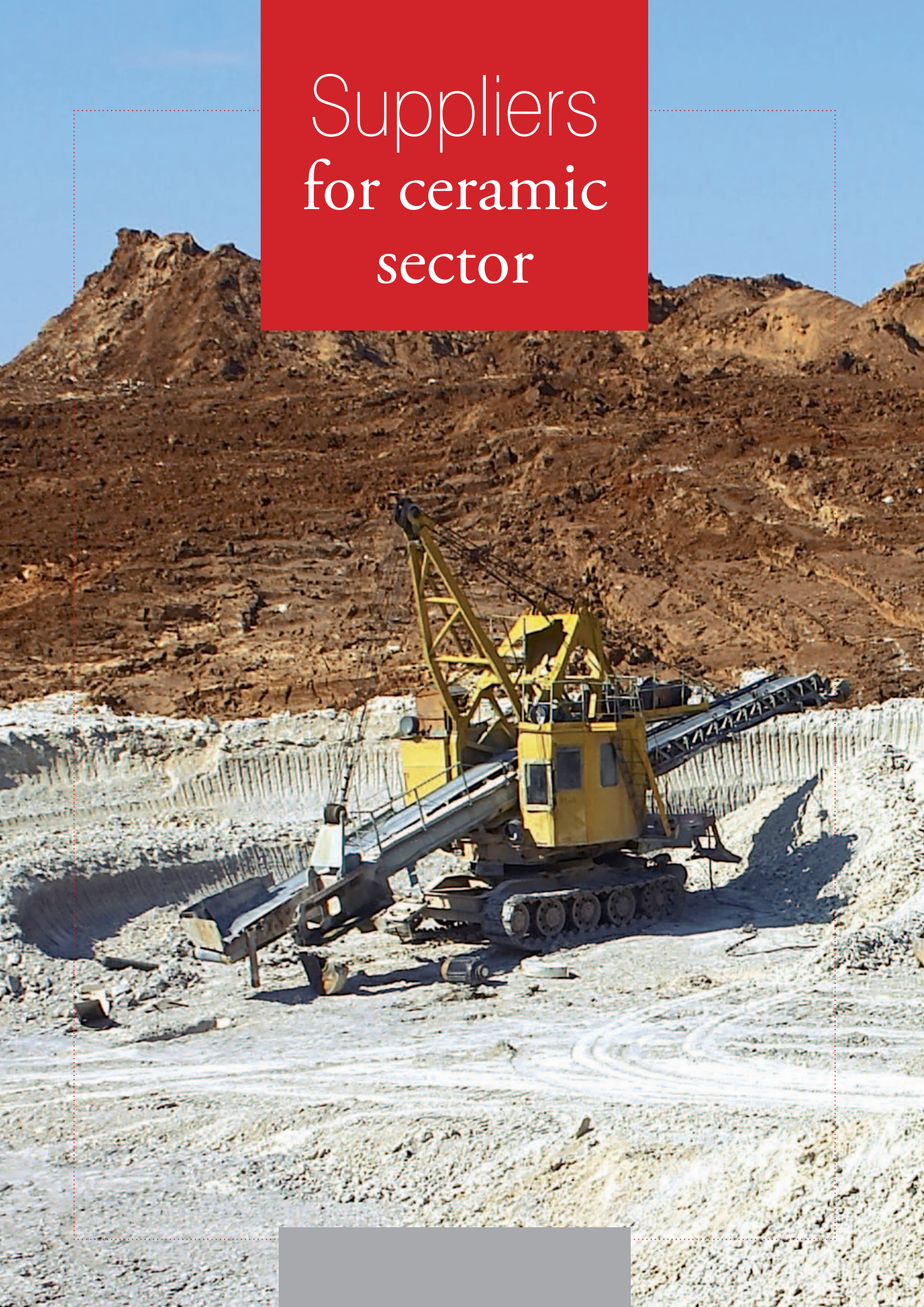
burnt, hydrated and agricultural lime, lime dust, chalk, limestone, sorbents, aggregates

ZPW Trzuskawica S.A. is a member of CRH (Cement Roadstone Holding), which is one of the biggest construction companies in the world. It produces construction materials like cement, lime, aggregates, asphalt masses, prefabricated concrete units and enriched materials. These products are sold through a specialized distribution network.





# Suppliers for ceramic sector







## Ceradbud Sp.j.

ul. Mickiewicza 22, 26-230 Radoszyce

świętokrzyskie

+48 (41) 373 53 51

+48 (41) 373 59 11

biuro@ceradbud.pl

### sales contact

hurtownia@ceradbud.pl

www.ceradbud.pl

### profile

clay, brick dust

The firm mines and delivers ceramic clay for the ceramic industry and manufactures and sells brick dust and construction materials for the construction industry.

## JetSystem

ul. Niska 2, 82-300 Elbląg

warmińsko-mazurskie

+48 (55) 236 18 82

+48 (55) 236 18 84

biuro@jetsystem.pl

### sales contact

biuro@jetsystem.pl

www.jetsystem.pl

### profile

waterjet cutting machines, pumps, accessories

JetSystem is an authorized distributor of Omax Corp. in Poland, Lithuania, Latvia, Estonia, Russia, Ukraine and Belarus. It also provides high quality after-sale customer service. The firm's service technicians install equipment, train operators and provide technical support as well as warranty and post-warranty service. The firm has its own store of spare parts that can be delivered immediately to every location. JetSystem also sells waterjet cutting abrasive under its own brand name JetGarnet.

## Lepolam Wichrowscy sp.j.

ul. Przemysłowa 35, Nowiny 26-052

świętokrzyskie

+48 (41) 348 03 63/64

+48 602 272 979

jkwichrowski@lepolam.com.pl

### sales contact

sprzedaz@lepolam.com.pl

www.lepolam.pl

### profile

thermal moulding, production of moulds (cast and milled), production of neon signs and taxi signs, plastic items

Lepolam is a family business established in 1992. It has the necessary expertise to deal with a wide range of orders, from the simplest ones to the most complex ones. Years of experience gained in working with very demanding customers guarantee high quality.

## Marmur-Płytki J. Łata

Podłęże 48, 28-400 Pińczów

świętokrzyskie

+48 (41) 358 91 89

+48 (41) 357 61 46

marmury@marmury-plytki.pl,

### sales contact

jacek@marmury-plytki.pl

www.marmury.home.pl

### profile

marbles, aglo-marbles, granites, Chinese granites, Pińczów limestone

The firm manufactures marble, limestone and granite products, which are used in commercial and residential buildings. It is one of the not so many Polish firms which process raw blocks of Polish marble. It also processes stone from Morawica, Bolechowice-Nowiny and Pińczów quarries.

## Morawica S.A. Limestone Mine

ul. Górnicza 42, 26-026 Morawica

świętokrzyskie

+48 (41) 367 02 00

+48 (41) 367 02 99

kwmorawica@kwmorawica.kielce.pl

### sales contact

kwmorawica@kwmorawica.kielce.pl

www.kwmorawica.kielce.pl

### profile

broken mineral aggregates, marble, industrial limestone, agricultural fertilizers

Morawica S.A. Limestone Mine is located in świętokrzyskie voivodeship, in Białe Zagłębie, 13 km away from Kielce. The company is a renowned major producer of high quality stone for metallurgical, sugar and power industries, aggregates for construction industry and road engineering, and marble elements. The company also produces large quantities of lime (calcium-carbonate) fertilizers that are considered environmentally friendly.

## Piecobud Sp. z o.o.

ul. Okulickiego 107, 37-450 Stalowa Wola

podkarpackie

+48 (15) 842 52 75

+48 (15) 844 54 23

piecobud@piecobud.pl

### sales contact

piecobud@piecobud.pl

www.piecobud.pl

### profile

construction, installation and assembly of glass and metallurgical furnaces, rotary furnaces, tunnel furnaces and dryers, chamber furnaces, furnaces for chemical industry, water and steam boilers, industrial ceramic, reinforced concrete and steel chimneys, steel structures, industrial machinery and installations, control and measurement instruments and automation systems

Depending on the project being implemented and the investor's requests, the company provides technical documentation of the plant, production, delivery and assembly of steel structures, delivery and installation of mechanical equipment and components, making and installation of process installations, including control and measurement instruments and automation systems, delivery of ceramic materials, construction of fire-resistant and insulating envelopes, demolition and dismantling works, disposal of hazardous materials.

## Zajdel – Pracownia Szkła i Ceramiki

ul. Białobrzaska 90, 38-400 Krosno

podkarpackie

+48 (13) 432 52 64

+48 (13) 432 52 64

krzysztofzajdel@gazeta.pl

### sales contact

krzysztofzajdel@gazeta.pl

www.zajdel.com.pl

### profile

construction and reparation of ceramic furnaces for glass melting and working, chamotte bricks and linings, resistance furnaces, ceramic linings, fusing

The firm's core business is the construction and reparation of different types of ceramic furnaces for glass melting and working. It also specializes in the production of chamotte bricks and linings, which are indispensable for an efficient and economical operation of tank furnaces. The firm also constructs resistance furnaces used for firing ornaments on glassware and in fusing technology.

## Lubelskie Voivodeship

ALV Granit s.c. – 13  
 Elektrobet – 6  
 Euroglass Sp. z o.o. – 25  
 Grupa Prefabet S.A. – Branch in Długi Kąt – 7  
 Marmury Centrum Lublin Sp.j. – 14  
 Megola Zakład Wapienno-Piaskowy – 9  
 PPHU s.c. Stan-Lub L. Bujata, S. Maliborski – 10  
 PW Pro-inwent – 27  
 Stachema Polska Sp. z o.o. – 10

## Podkarpackie Voivodeship

Akropol – 13  
 Granit – 13  
 Huta Szkła w Jaśle S.A. Grupa Kapitałowa Krosno – 26  
 Krosnglass S.A. – 26  
 Kwarcsystem – 8  
 Piecobud Sp. z o.o. – 27, 34  
 Sanglass S.A. – 28  
 Spólnet – 28  
 Zajdel – Pracownia Szkła i Ceramiki – 30, 34

## Podlaskie Voivodeship

Białostockie Kopalnie Surowców Mineralnych Sp. z o.o. – 5  
 Eurovisa – 6  
 SKSM Suwalskie Kopalnie Surowców Mineralnych – 10

## Świętokrzyskie Voivodeship

Ceradbud Sp.j. – 33  
 „Chemiplastyka” Spółka z o.o. – 25  
 Dolina Nidy Sp. z o.o. – 19  
 Dyckerhoff Polska Sp. z o.o. – 5  
 Dyckerhoff Polska Sp. z o.o. – Plant in Kielce – 5  
 Dyckerhoff Polska Sp. z o.o. – Plant in Starachowice – 5  
 Grupa Ożarów S.A. – 7  
 Lhoist Bukowa Sp. z o.o. – 20, 27  
 Kamieniołomy Świętokrzyskie Sp. z o.o. – 13  
 Kopalnia Dolomitu Radkowice – 8, 14  
 Kopalnia Drugnia Rządowa – 19  
 Kopalnia Suchowola – 19  
 Kopalnia Tumlin-Gród – 14  
 KOSD S.A. – 8, 20  
 Krak-Trans – 26  
 Lafarge Cement S.A. – 8  
 Lepolam Wichrowscy sp.j. – 33  
 Marmur – Płytki J. Łata – 14, 33  
 Morawica S.A. Limestone Mine – 9, 15, 20, 34  
 Nordkalk Sp. z o.o. – Plant in Miedzianka – 20  
 Pilkington Polska Sp. z o.o. – 27  
 Piotrowice Sp. z o.o. – 21  
 PCC Silicium S.A. – 9, 15  
 PPHU Dombud S. Łopot – 15  
 ZPUH Lakton P. Stępień – 28, 30  
 ZPW Trzuskawica S.A. – 19, 30

## Warmińsko-Mazurskie Voivodeship

Atar Glass M. Tarkowian – 25  
 Eco-Ter Sp. z o.o. – 6, 25  
 General Żwir Sp. z o.o. – 6  
 Grupa Prefabet S.A. – Branch in Wilkasy – 7  
 JetSystem – 26, 33  
 Olsztyńskie Kopalnie Surowców Mineralnych (OKSM) – 9  
 PCC Silicium S.A. – 9  
 Pujan – 28  
 Żwir-Trans s.c. – 10



## Regional Investor Assistance Centres (COI)

They are partners of the Polish Information and Foreign Investment Agency (PAIIIZ) at the regional level. The Centres provide consultancy and information services for business entities considering investment projects in a particular area. COIs also provide dedicated service and investment guidance, including post-investment support within the voivodeship where the project is located. The network of COIs has been created in conjunction with the Marshals of Voivodeships who are statutorily responsible for economic promotion of the region.

■ **THE LUBELSKIE VOIVODESHIP**  
**Lubelskie Voivodeship Marshal Office**  
**Department of Economy and Innovation**  
**Trade Promotion and Investment Unit**  
**Investor Assistance Centre**

Stefczyka 3  
20-151 Lublin  
tel. +48 (81) 537 16 21  
fax +48 (81) 537 16 37  
e-mail: coi@lubelskie.pl  
www.invest.lubelskie.pl

■ **THE PODKARPACKIE VOIVODESHIP**  
**Rzeszów Regional Development Agency S.A.**  
**Inward Investment Centre**

Szopena 51  
35-959 Rzeszów  
tel. +48 (17) 852 43 76  
fax +48 (17) 852 43 74  
e-mail: coi@rarr.rzeszow.pl  
www.coi.rzeszow.pl

■ **THE PODLASKIE VOIVODESHIP**  
**Office of the Marshall of the Podlaskie Voivodeship**  
**Investor Assistance Centre**

Kardynała S. Wyszyńskiego 1  
15-888 Białystok  
tel. +48 (85) 749 74 95  
fax +48 (85) 749 74 40  
e-mail: adam.borawski@wrotapodlasia.pl  
www.wrotapodlasia.pl

■ **THE ŚWIĘTOKRZYSKIE VOIVODESHIP**  
**Office of the Marshall of the Świętokrzyskie Voivodeship**  
**Regional Policy Department**  
**Investor Assistance Centre**

Sienkiewicza 63  
25-002 Kielce  
tel. +48 (41) 365 81 90  
fax +48 (41) 365 81 91  
e-mail: coi@sejmik.kielce.pl  
www.sejmik.kielce.pl

■ **THE WARMIŃSKO-MAZURSKIE VOIVODESHIP**  
**Warmia and Mazury Investor Service Center**  
**Warmia and Mazury Regional Development**  
**Agency Joint Stock Company in Olsztyn**

Gen. Józefa Bema 3  
10-516 Olsztyn  
tel. +48 (89) 535 67 80, +48 (89) 521 12 50  
fax +48 (89) 521 12 60  
e-mail: office@investinwarmiaandmazury.pl  
www.investinwarmiaandmazury.pl

## Investor Assistance Offices (BOI)

The Offices, based in City Councils, undertake actions to stimulate the city's economic activity. They provide direct support and assistance to investors who wish to locate their investment projects in a given municipality. They also draw up and update the city's investment offer by cooperating with other local government units.

■ **THE LUBELSKIE VOIVODESHIP**  
**Municipal Office of Lublin**  
**Investor Assistance Office**

Litewski 1  
20-080 Lublin  
tel. +48 (81) 466 25 00  
fax +48 (81) 466 25 01  
e-mail: inwestorzy@lublin.eu  
www.gospodarka.lublin.eu

■ **THE PODKARPACKIE VOIVODESHIP**  
**Municipal Office of Rzeszów**  
**Department of Promotion and International Cooperation**

Rynek 11  
35-064 Rzeszów  
tel./fax +48 (17) 875 47 42  
fax +48 (17) 875 47 47  
e-mail: promocja@erzeszow.pl

■ **THE PODLASKIE VOIVODESHIP**  
**Municipal Office of Białystok**  
**Investor Assistance Office**

Ślonimska 1  
15-950 Białystok  
tel. +48 (85) 869 60 28  
e-mail: b.in@um.bialystok.pl

■ **THE ŚWIĘTOKRZYSKIE VOIVODESHIP**  
**Municipal Office of Kielce**  
**Department of Economy Management Activation**

Strycharska 6  
25-659 Kielce  
tel. +48 (41) 367 63 56, +48 (41) 367 65 57  
fax +48 (41) 367 65 52  
e-mail: coi@um.kielce.pl

■ **THE WARMIŃSKO-MAZURSKIE VOIVODESHIP**  
**Municipal Office of Olsztyn**  
**Strategy and City Development Office**

Jana Pawła II 1  
10-101 Olsztyn  
tel. +48 (89) 527 31 11  
tel./fax +48 (89) 523 64 30  
e-mail: strategia@olsztyn.eu

## Regional Development Agency (ARR)

The Agencies provide consultancy and advisory services, identify the needs of businesses, define the nature and scope of assistance required, and determine available support instruments. They provide information on current subsidy programmes and eligibility requirements, promote programmes addressed to businesses, collect and evaluate applications for subsidies and forward them to the Polish Agency for Enterprise Development (PARP).

■ **THE LUBELSKIE VOIVODESHIP**  
**Biłgoraj Regional Development Agency**  
Kościuszki 65  
23-400 Biłgoraj  
tel. +48 (84) 686 48 87  
fax +48 (84) 686 53 93  
e-mail: [biuro@barr.org.pl](mailto:biuro@barr.org.pl)  
[www.barr.org.pl](http://www.barr.org.pl)

**Lublin Development Foundation**  
Rynek 7  
20-111 Lublin  
tel. +48 (81) 528 53 00  
fax +48 (81) 528 53 04  
e-mail: [lfr@lfr.lublin.pl](mailto:lfr@lfr.lublin.pl)  
[www.lfr.lublin.pl](http://www.lfr.lublin.pl)

■ **THE PODKARPACKIE VOIVODESHIP**  
**Regional Development Agency MARR**  
**Regional Consultation Office**  
Chopina 18  
39-300 Mielec  
tel. +48 (17) 773 82 56  
fax +48 (17) 788 32 62  
e-mail: [marr@marr.com.pl](mailto:marr@marr.com.pl)  
[www.marr.com.pl](http://www.marr.com.pl)

**Przemyśl Regional Development Agency**  
Ks. Piotra Skargi 7/1  
37-700 Przemyśl  
tel. +48 (16) 675 16 64  
fax +48 (16) 676 09 86  
**Information on duty:** additionally the office provides duty hours in the following towns: Lubaczów, Jarosław  
e-mail: [info@parr.pl](mailto:info@parr.pl)  
[www.parr.pl](http://www.parr.pl)

**Rzeszów Regional Development Agency**  
Szopena 51  
35-959 Rzeszów  
tel./fax +48 (17) 852 43 76, +48 (17) 852 43 74  
**Information on duty:** additionally the office provides duty hours in the following towns: Rzeszów, Strzyżów  
e-mail: [pk@rarr.rzeszow.pl](mailto:pk@rarr.rzeszow.pl)  
[www.rarr.rzeszow.pl](http://www.rarr.rzeszow.pl)  
[www.rarr.rzeszow.pl/en](http://www.rarr.rzeszow.pl/en)

**Regional Development Agency of Tarnobrzeg**  
Marii Dąbrowskiej 15  
39-400 Tarnobrzeg  
tel. +48 (15) 822 61 87  
fax +48 (15) 823 19 52  
e-mail: [tarr@tarr.pl](mailto:tarr@tarr.pl)  
[www.tarr.pl](http://www.tarr.pl)

■ **THE PODLASKIE VOIVODESHIP**  
**Regional Development Agency ARES in Suwałki**  
Noniewiczza 42 A  
16-400 Suwałki  
tel. +48 (87) 566 70 35, +48 (87) 566 61 06  
fax +48 (87) 566 74 97  
e-mail: [arrares@ares.suwalki.pl](mailto:arrares@ares.suwalki.pl)  
[www.ares.suwalki.pl](http://www.ares.suwalki.pl)

**Podlaska Regional Development Foundation (PRDF)**  
Starobojarska 15  
15-073 Białystok  
tel. +48 (85) 740 86 83  
fax +48 (85) 740 86 85  
e-mail: [pfrr@pfrr.pl](mailto:pfrr@pfrr.pl)  
[www.pfrr.pl](http://www.pfrr.pl)  
[www.pfrr.pl/123.page](http://www.pfrr.pl/123.page)

■ **THE ŚWIĘTOKRZYSKIE VOIVODESHIP**  
**Foundation – Regional Development Agency**  
**in Starachowice (FARR)**  
Mickiewicza 1A  
27-200 Starachowice  
tel. +48 (41) 274 46 90  
fax +48 (41) 274 04 09  
e-mail: [farr@farr.pl](mailto:farr@farr.pl)  
[www.farr.pl](http://www.farr.pl)

**Chamber of Industry and Commerce Staropolska**  
Sienkiewicza 53  
25-002 Kielce  
tel. +48 (41) 344 43 92  
fax +48 (41) 368 02 21  
e-mail: [sekretariat@siph.com.pl](mailto:sekretariat@siph.com.pl)  
[www.siph.com.pl](http://www.siph.com.pl)  
[www.siph.com.pl/eng/Glowna](http://www.siph.com.pl/eng/Glowna)

■ **THE WARMIŃSKO-MAZURSKIE VOIVODESHIP**  
**Development Agency in Działdowo**  
Wł. Jagiełły 15  
13-200 Działdowo  
tel. +48 (23) 697 06 66  
fax +48 (23) 697 06 67  
e-mail: [darsa@darsa.pl](mailto:darsa@darsa.pl)  
[www.darsa.pl](http://www.darsa.pl)

**Regional Development Agency in Warmińsko-Mazurskie Voivodeship in Olsztyn**  
Gen. Józefa Bema 3  
10-516 Olsztyn  
tel. +48 (89) 521 12 50  
fax +48 (89) 521 12 60  
e-mail: [wmarr@wmarr.olsztyn.pl](mailto:wmarr@wmarr.olsztyn.pl)  
[www.wmarr.olsztyn.pl](http://www.wmarr.olsztyn.pl)  
[www.wmarr.olsztyn.pl/s/index.php?lang=en](http://www.wmarr.olsztyn.pl/s/index.php?lang=en)

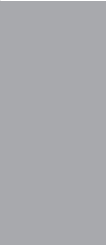


## NON-FERROUS MATERIALS PRODUCTS' SECTOR

---



**Published by:**  
**Polish Information and Foreign Investment Agency**  
12 Bagatela Street, 00-585 Warsaw  
tel. +48 22 334 98 00; fax +48 22 334 98 86  
[www.paiz.gov.pl](http://www.paiz.gov.pl)  
[www.whyeasternpoland.eu](http://www.whyeasternpoland.eu)



Information included in this study is not to be treated as advice, opinion or recommendation on specific facts associated with undertaking or conducting business activity, but is only a rough guide in planning investment decisions. Therefore, promotional publications and materials may not suffice to take correct decisions and actions in some complex and unusual situations. Promotional publications and materials are not intended to replace the services of a tax or financial advisor.

PHOTOS: Shutterstock

Free copy