



# PIOTRKÓW TRYBUNALSKI

---

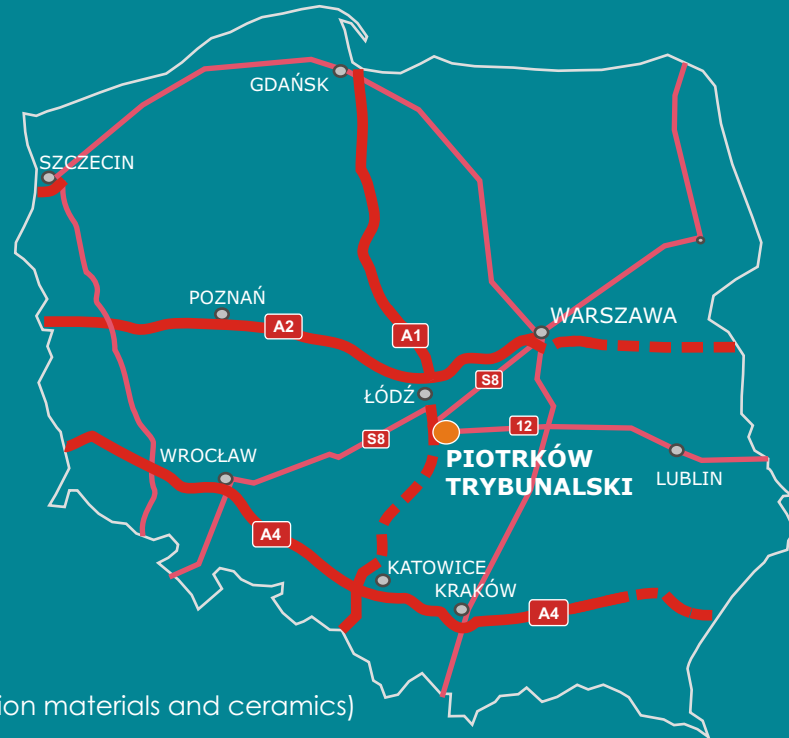
*for investors*

# PIOTRKÓW TRYBUNALSKI

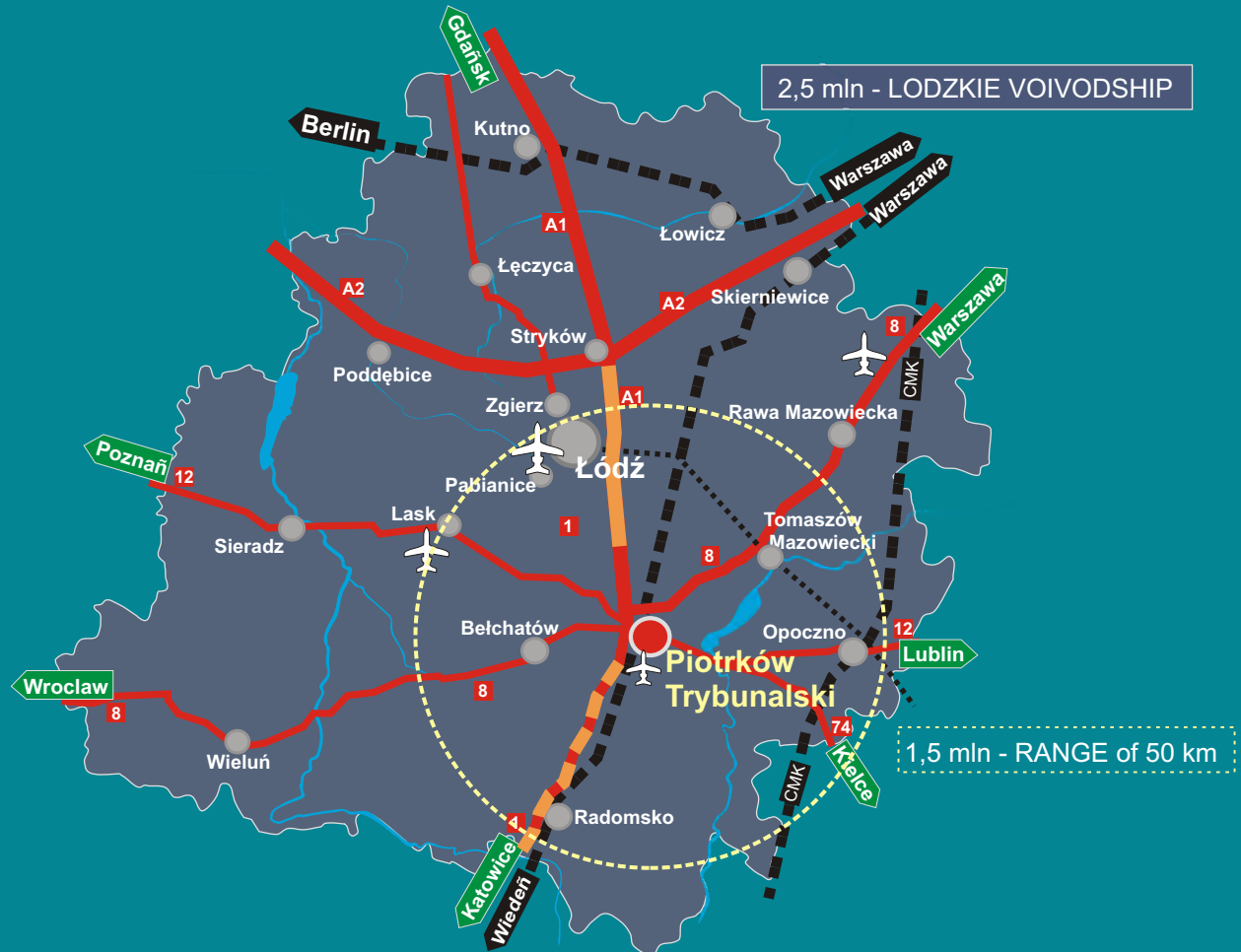
Piotrków Trybunalski is the second largest centre of industry, services, education and culture in **łódzkie voivodship**. The town has over **76 thousand inhabitants**. The most important advantage of Piotrków is its **location in Central Poland**, by the **A1 motorway** running along the western border of the town. Piotrków is situated **on the intersection point of significant national and international roads**. The local **airport** with a 1000-metre concrete runway for 'air taxis' increase the investment attractiveness of the town.

**NATURAL RESOURCES** available within the area of 40 km

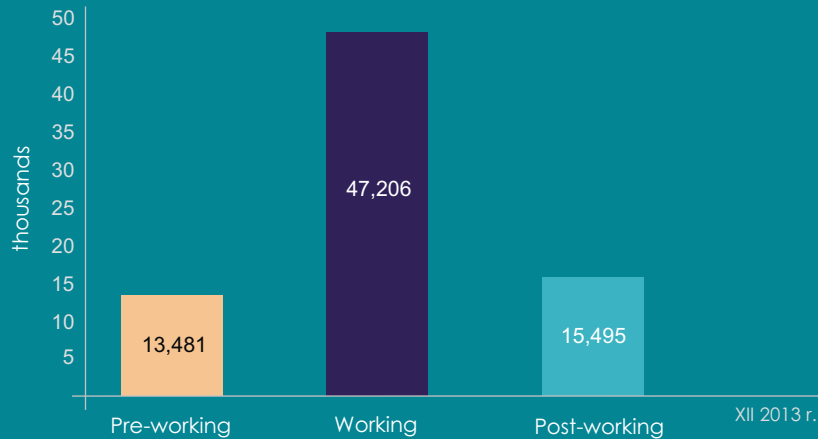
- arenaceous quartz deposits (manufacture of construction materials and ceramics)
- glass and moulding sands
- rock raw materials clay, loam, kaolin (stoneware, glazed earthenware products)
- power resources lignite - Lignite Mine in Bełchatów the largest lignite mine in Poland
- thermal waters



## ROAD COMMUNICATION AND POPULATION



## STRUCTURE OF POPULATION



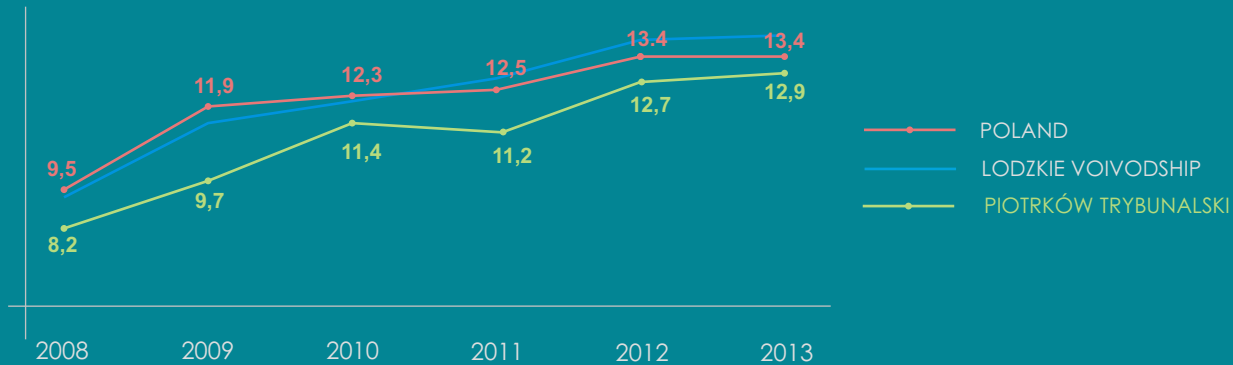
## PIOTRKÓW TRYBUNALSKI - REGIONAL ACADEMIC CENTRE

over 3.200 STUDENTS

### HIGHER EDUCATION INSTITUTIONS

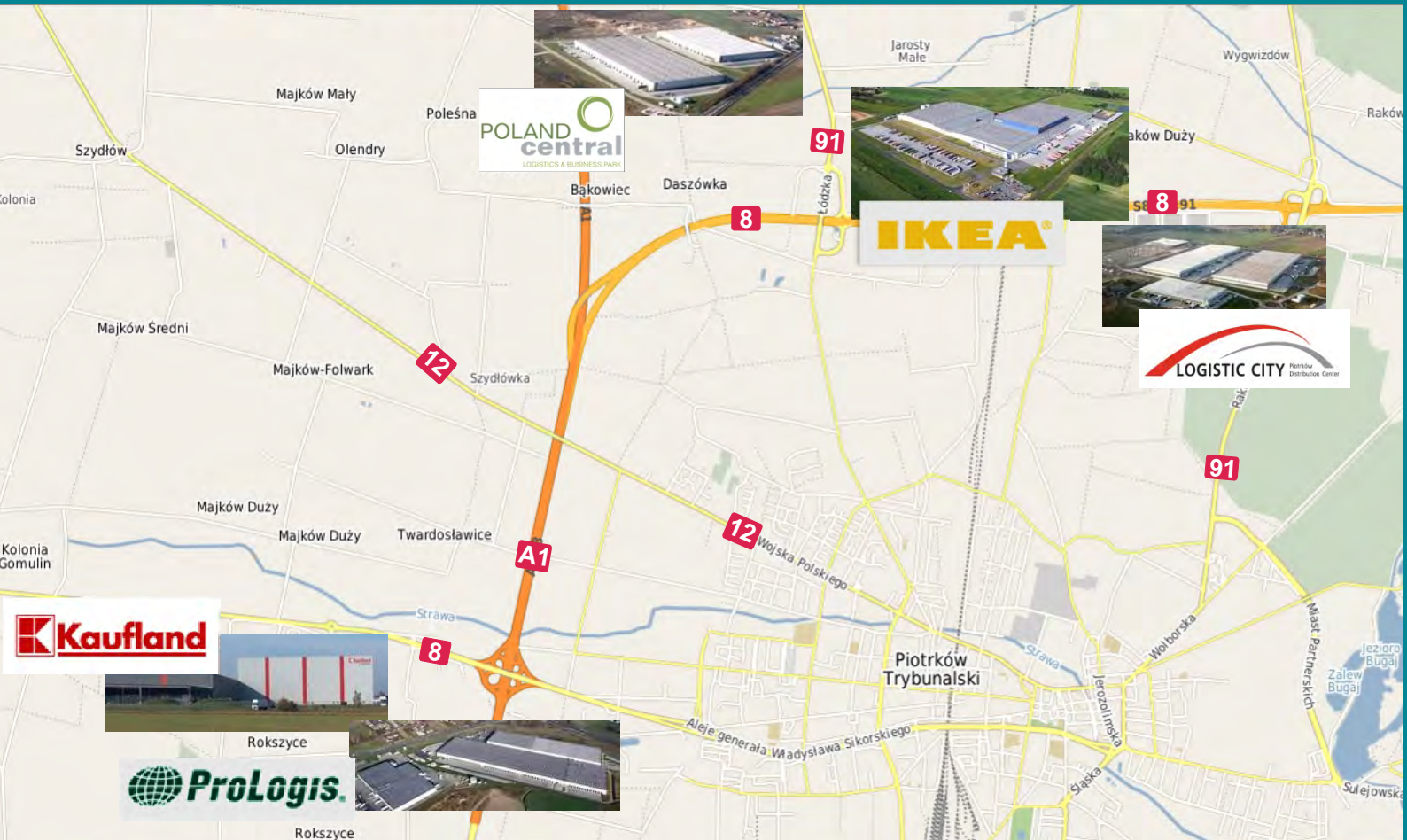
- UNIVERSITY OF HUMANITIES AND SCIENCES
- SCHOOL OF COMMERCE
- ACADEMY OF INTERNATIONAL RELATIONS AND AMERICAN STUDIES - postgraduate studies
- THE COLLEGE OF COMMUNICATION, POLITICAL SCIENCE AND INTERNATIONAL RELATIONS - postgraduate studies

## UNEMPLOYMENT RATE in %



Average monthly gross wages and salaries in 2012  
(in PLN)

# LOGISTICS CENTRE OF POLAND



# RELIEFS FOR INVESTORS

---

Companies investing in Piotrków Trybunalski can apply for investment tax reliefs in the form of exemption from real estate tax.

In order to obtain the exemption for one year, a company has to create at least 5 new jobs or incur capital expenditure of at least PLN 300.000.

The exemption for two years, a company has to create at least 10 new jobs or incur capital expenditure of at least PLN 600.000.

The exemption for three years, a company has to create at least 25 new jobs or incur capital expenditure of at least PLN 1.500.000.

## LODZ SPECIAL ECONOMIC ZONE SUBZONE OF PIOTRKÓW TRYBUNALSKI

---



Business entities operating within the Lodz Special Economic Zone benefit from state aid in a form of exemption from corporate or personal income tax.

State aid is awarded for:

- new investments
- job creation

### LEVEL OF STATE AID

- 55% for small enterprises
- 45% for medium-sized enterprises
- 35% for large enterprises

# INVESTMENT AREAS

---



INDUSTRIAL AREAS



LAND FOR PRODUCTION AND LOGISTICS



AREAS FOR SERVICES-RELATED ACTIVITIES



# AVAILABLE INDUSTRIAL AREA INDUSTRIAL AREA

AREA ~20 ha

Designation of the real estate Local zoning development plan - the greater part of the real estate is located in the 1P urban unit designated for economic activity development, including production facilities, warehouses

Greenfield area

Technical infrastructure - electrical energy, gas; water and sewage accessible in the direct vicinity



# LAND FOR PRODUCTION AND LOGISTICS

## Located adjacent to Expressway no. 8

AREA ~20 ha

Designation of the real estate

Local zoning development plan - the real estate is located in the 1UW urban unit designated for services connected with economic activities, processing, production, warehousing, storing and operation of such activities

Greenfield area

Technical infrastructure - available in Cała street



# INVESTMENT AREAS AROUND THE WATER BODY „BUGAJ”

AREA ~25 ha

- Areas covered by a local spatial development plans
- Direct vicinity of large forest areas
- The area is well connected
- For many years the place has been an area for summer recreation in the minds of the residents of Piotrków
- The high level of purity of the water in the "swimming" water body











PLANNING OFFICE FOR URBAN DEVELOPMENT  
MUNICIPAL OFFICE IN PIOTRKÓW TRYBUNALSKI

97-300 Piotrków Trybunalski, ul. Szkolna 28  
tel. 44 732 18 75, 732 18 41  
e-mail: [obsługa.inwestorów@piotrkow.pl](mailto:obsługa.inwestorów@piotrkow.pl)  
[www.piotrkow.pl](http://www.piotrkow.pl)